

OPTION MODULE DIN

INSTALLATION INSTRUCTIONS

COPYRIGHT

Electrex is a trademark of Akse S.r.l. All rights reserved.
It is forbidden to duplicate, adapt, transcript this document without Akse written authorization, except when regulated accordingly by the Copyright Laws.

WARRANTY

This product is covered by a warranty against material and manufacturing defects for a 36 months period from the manufacturing date.

The warranty does not cover the defects that are due to:

- Negligent and improper use
- Failures caused by atmospheric hazards
- Acts of vandalism
- Wear out of materials
- Firmware upgrades

Akse reserves the right, at its discretion, to repair or substitute the faulty products
The warranty is not applicable to the products that will result defective in consequence of a negligent and improper use or an operating procedure not contemplated in this manual.

RETURN AND REPAIR FORMALITIES

Akse accepts the return of instruments for repair only when authorized in advance. The transport costs are at customer charge.

RE-SHIPING OF REPAIRED PRODUCT

The terms for re-shipment of repaired products are ex-works, i.e. the transport costs are at customer charge.

Products returned as defective but found to be perfectly working by our laboratories, will be charged a flat fee to account for checking and testing time irrespective of the warranty terms.

SAFETY

In order to maintain this condition and to ensure safe operation, the user must comply with the indications and markings contained in the following instructions:

- When the instrument is received, before starting its installation, check that it is intact and no damage occurred during transport.
- Before mounting, ensure that the instrument operating voltages and the mains voltage are compatible then proceed with the installation.
- The instrument power supply needs no earth connection.
- The instrument is not equipped with a power supply fuse; a suitable external protection fuse must be foreseen by the contractor.
- Maintenance and/or repair must be carried out only by qualified, authorized personnel
- If there is ever the suspicion that safe operation is no longer possible, the instrument must be taken out of service and precautions taken against its accidental use.
- Operation is no longer safe when:

- 1) There is clearly visible damage.
- 2) The instrument no longer functions.
- 3) After lengthy storage in unfavorable conditions.
- 4) After serious damage occurred during transport

The instruments must be installed in respect of all the local regulations.

OPERATOR SAFETY

Warning: Failure to observe the following instructions may lead to a serious danger of death.

- Do not use the digital outputs for protection functions nor for power limitation functions. The instrument is suitable only for secondary protection functions.

Precautions: Failure to respect the following instructions may irreversibly damage to the instrument.

- The outputs and the options operate at low voltage level; they cannot be powered by any unspecified external voltage.
- The application of currents not compatible with the current inputs levels will damage to the instrument.

MODELS	
PFE830-00	OPTION MODULE D2 RS485
PFE825-00	OPTION MODULE D2 RS232
PFE835-00	OPTION MODULE D2 2AO4-20mA

Further documentation may be downloaded from our web site www.electrex.it.

This document is owned by company AKSE that reserves all rights.

DECLARATION OF CONFORMITY

Akse hereby declares that its range of products complies with the following directives EMC 89/336/EEC 73/23CE 93/68 CE and complies with the following product's standard CEI CEI EN 61326 – IEC 61326 CEI EN 61010 – IEC 61010
The product has been tested in the typical wiring configuration and with peripherals conforming to the EMC directive and the LV directive.

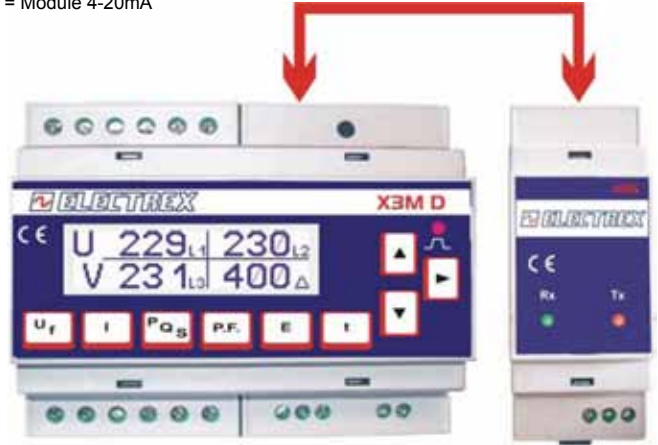
The options for the Fast, Flash D and X3M D should be mounted on the side of the instrument and connected to the same via the cable supplied with the options.

The configuration of the options can be made via dip-switch (RS232 o RS485) or via serial port with Modbus protocol.

The option must be connected when the instrument is turned off, otherwise it will not be recognized.

CN1 = Interface RS485 or Interface RS232

CN2 = Module 4-20mA

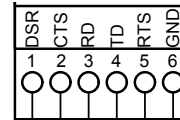


RS485 OPTION

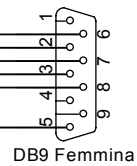


PIN	DESCRIPTION
1	A +
2	B -
3	Shield

RS232 OPTION



PIN	DESCRIPTION
1	DSR (Handshake to DTE)
2	CTS (Handshake to DTE)
3	RD (Data to DTE)
4	TD (Data from DTE)
5	RTS (Handshake from DTE)
6	Shield

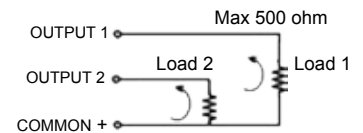


DB9 Femmina

DOUBLE ANALOG 4 - 20 mA OUTPUT OPTION



PIN	DESCRIPTION
1	OUTPUT 1
2	OUTPUT 2
3	COMMON +



Self powered outputs: do not use external power supplies.