

OPTION MODULE 96

INSTALLATION GUIDE

COPYRIGHT

Electrex is a trademark of Akse S.r.l. All rights reserved.
It is forbidden to duplicate, adapt, transcribe this document without Akse written authorization, except when regulated accordingly by the Copyright Laws.

WARRANTY

This product is covered by a warranty against material and manufacturing defects for a 24 months period from the manufacturing date.

The warranty does not cover the defects that are due to:

- Negligent and improper use
- Failures caused by atmospheric hazards
- Acts of vandalism
- Wear out of materials
- Firmware upgrades

Akse reserves the right, at its discretion, to repair or substitute the faulty products

The warranty is not applicable to the products that will result defective in consequence of a negligent and improper use or an operating procedure not contemplated in this manual.

RETURN AND REPAIR FORMALITIES

Akse accepts the return of instruments for repair only when authorized in advance. The transport costs are at customer charge.

RE-SHIPING OF REPAIRED PRODUCT

The terms for re-shipment of repaired products are ex-works, i.e. the transport costs are at customer charge.

Products returned as defective but found to be perfectly working by our laboratories, will be charged a flat fee to account for checking and testing time irrespective of the warranty terms.

SAFETY

To assure a safe use of this device, the user must follow the indications and symbols of the following instructions:

- When the instrument is received, before starting its installation, check that it is intact and no damage occurred during transport.
- Before mounting, ensure that the instrument operating voltages and the mains voltage are compatible then proceed with the installation.
- Maintenance and/or repair must be carried out only by qualified, authorized personnel
- If there is ever the suspicion that safe operation is no longer possible, the instrument must be taken out of service and precautions taken against its accidental use

Operation is no longer safe when:

- There is clearly visible damage.
- The instrument no longer functions.
- After lengthy storage in unfavorable conditions.
- After serious damage occurred during transport

The instruments must be installed in respect of all the local regulations.

OPERATOR SAFETY

Warning: Failure to observe the following instructions may lead to a serious danger of death.

- Do not use the digital outputs for protection functions nor for power limitation functions. The instrument is suitable only for secondary protection functions.

Precautions: Failure to respect the following instructions may irreversibly damage to the instrument

- The outputs and the options operate at low voltage level; they cannot be powered by any unspecified external voltage.
- The application of currents not compatible with the current inputs levels will damage to the instrument.

| MODELS | |
|-----------|----------------------------|
| PFE420-00 | OPTION MODULE 96 RS485 |
| PFE421-00 | OPTION MODULE 96 RS232 |
| PFE422-00 | OPTION MODULE 96 2AO4-20mA |

Further documentation may be downloaded from our web site www.electrex.it.

This document is owned by company AKSE that reserves all rights.

DECLARATION OF CONFORMITY

Akse hereby declares that its range of products complies with the following directives EMC 89/336/EEC 73/23CE 93/68 CE and complies with the following product's standard CEI EN 61326 – IEC 61326 CEI EN 61010 – IEC 1010.

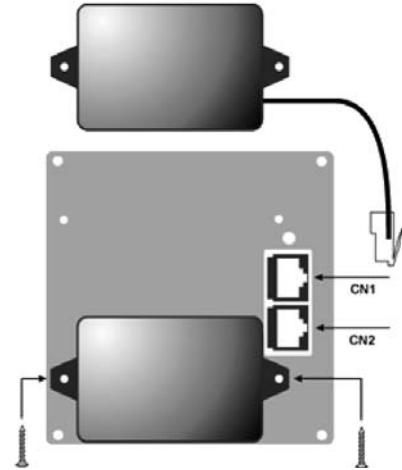
The product has been tested in the typical wiring configuration and with peripherals conforming to the EMC directive and the LV directive.

akse srl Via Aldo Moro, 39 42100 Reggio Emilia Italy
Tel. +39 0522 924 244 Fax +39 0522 924 245 info@akse.it www.akse.it
P.I.01544980350 R.E.A. 194296 Cap. Soc. Euro 85.800,00 i.v.

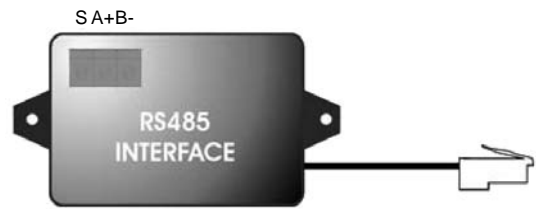
The optional components of the 96x96 instruments are assembled on the back panel of the instrument, where the RJ45 connectors are located. The optional component feature settings are only displayed when one of them is connected to the instrument.

CN1 = connector: suitable for the 4-20 mA optional module or for the Hardware up-date key.

CN2 = connector: suitable for the RS485 or RS232 optional modules.



OPTION MODULE 96 RS485



| PIN | DESCRIPTION |
|-----|-------------|
| S | Schermo |
| A | A + |
| B | B - |

OPTION MODULE 96 RS232

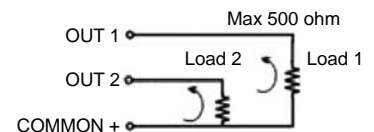


| PIN | DESCRIPTION |
|-----|--------------------------|
| 2 | RD (Data to DTE) |
| 3 | TD (Data from DTE) |
| 5 | GND |
| 6 | DSR (Handshake to DTE) |
| 7 | RTS (Handshake from DTE) |
| 8 | CTS (Handshake to DTE) |

OPTION MODULE 96 2AO4-20 mA



| PIN | DESCRIPTION |
|-----|-------------|
| 1 | OUT 1 |
| 2 | OUT 2 |
| C | COMMON + |



Self powered output: do not use external power supply.

ELECTREX
the energy saving technology
www.electrex.it - info@electrex.it

Subject to modification without notice.
Preliminary. Edition 24-06-2008.