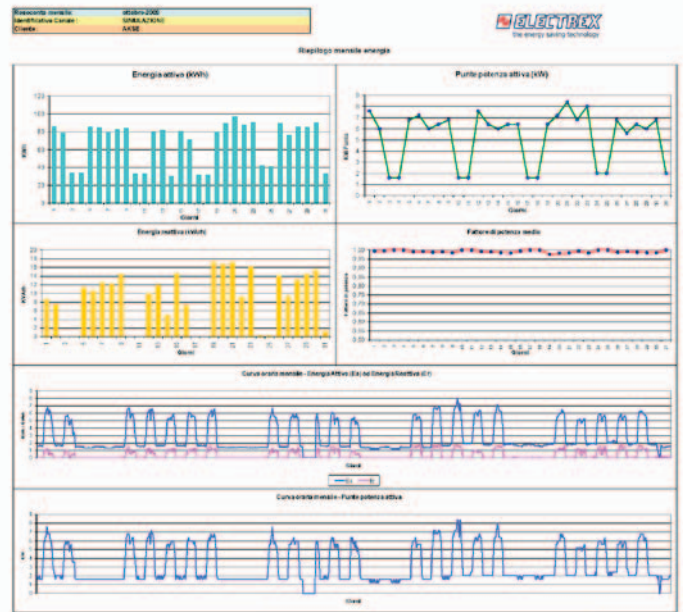
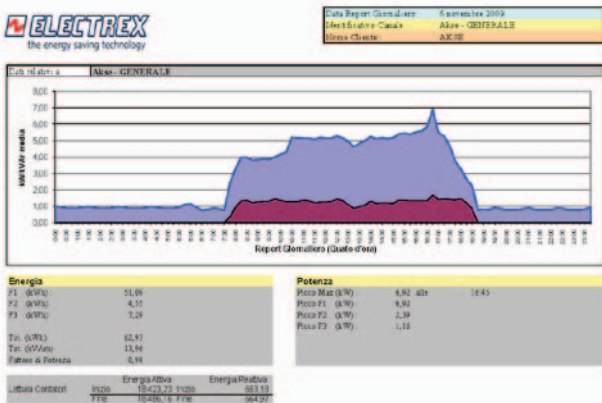


PERSONAL REPORT

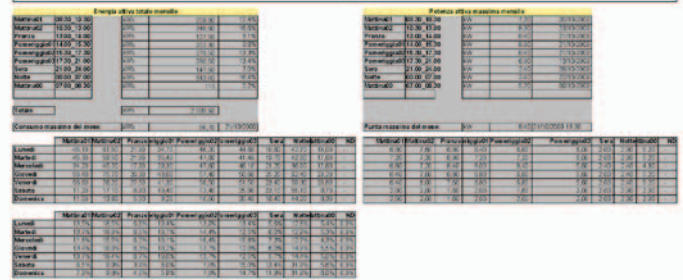
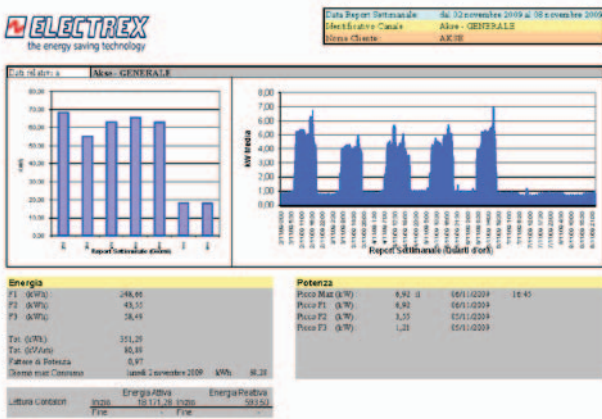
Energy Brain Personal Report is an option of the Energy Brain software which allows to generate automatically and periodically reports (also customized) using the data already present in the Energy Brain's database. The data in the reports is organized by channels and saved in an .xls format file. The reports can be enclosed, automatically, as attachments in an e-mail and/or saved in a PC folder and/or transmitted via FTP in a different location/server. These features are especially useful to all the professionals, like energy consultants and groups, which are interested in automating the report delivery.

Channel data exporting - Daily basis

Customized channel data exporting - Monthly basis

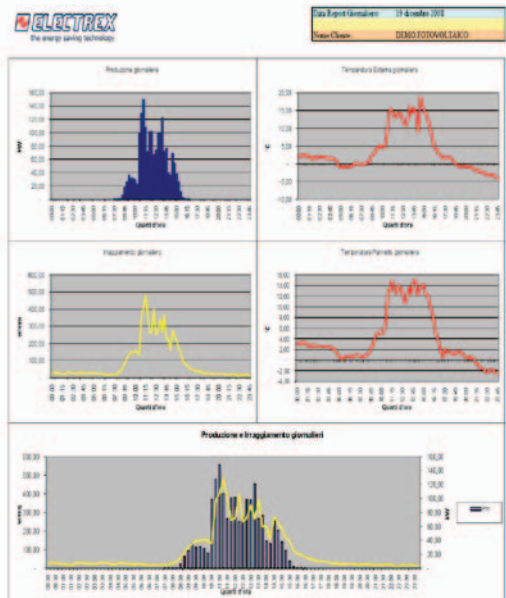
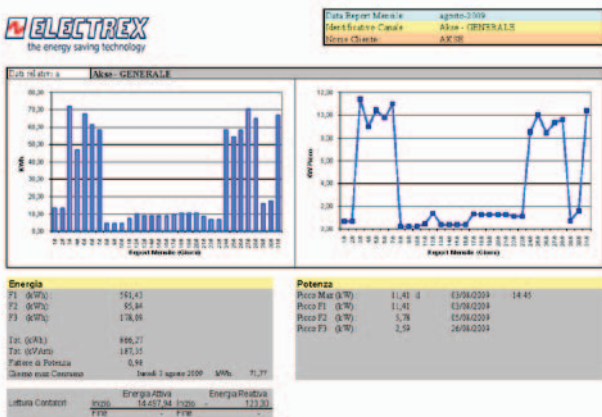


Channel data exporting - Weekly basis

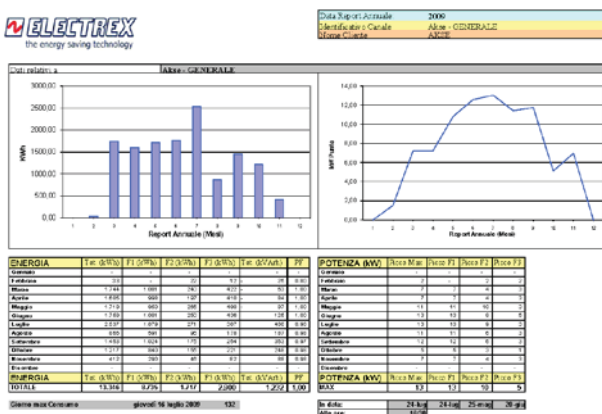


Channel data exporting - Monthly basis

Multi-Channel data exporting - Monthly basis

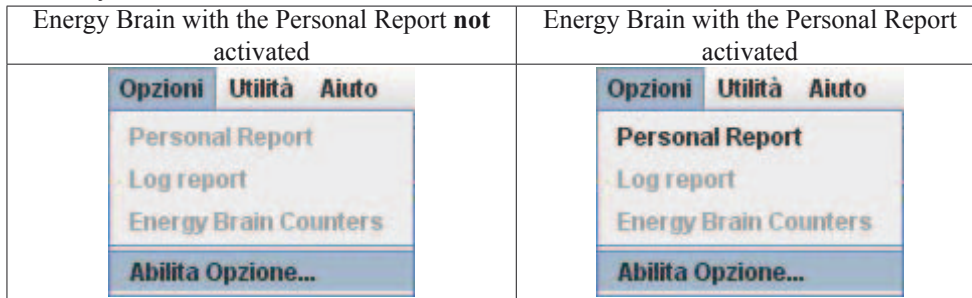


Channel data exporting - Yearly basis



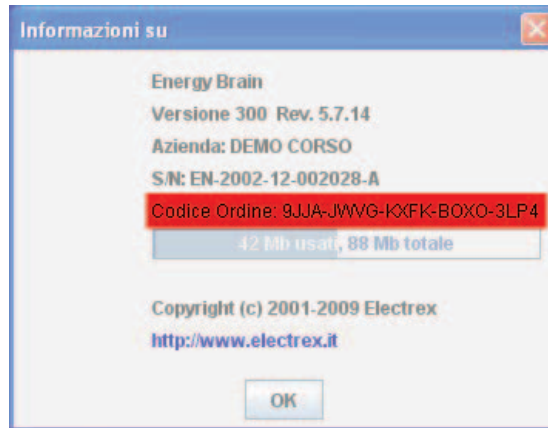
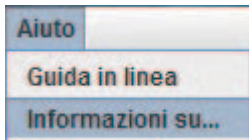
PERSONAL REPORT - ACTIVATION

1) Purchased together with a copy of Energy Brain software. In this case the option will be activated through the hardware USB key.



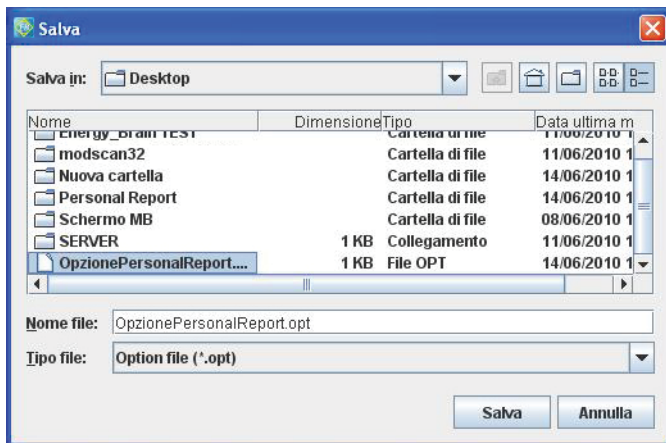
2) Purchased after the installation of Energy Brain. In this case it is necessary to communicate the Order Code (see pictures), of the Energy Brain software copy where the option will be installed.

2.1) The order code can be found following the "Help", "About..." Menu voice.

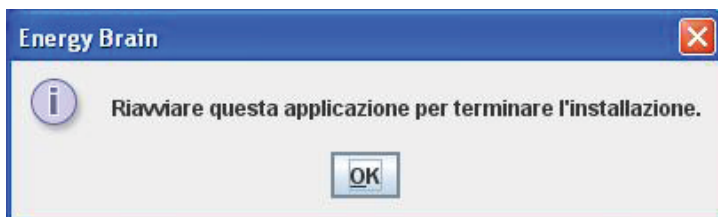


2.3) Akse / Electrex, once that has verified if the data is correct, will send you an unblocking file by e-mail.


2.4) once you have received the file (with the .opt extension), open Energy Brain and select from the "Options" menu the "Add Option" voice. The following window that will appear you may browse and select the unblocking file.





2.5) Once you have saved the file restart Energy Brain. This will activate the added option.

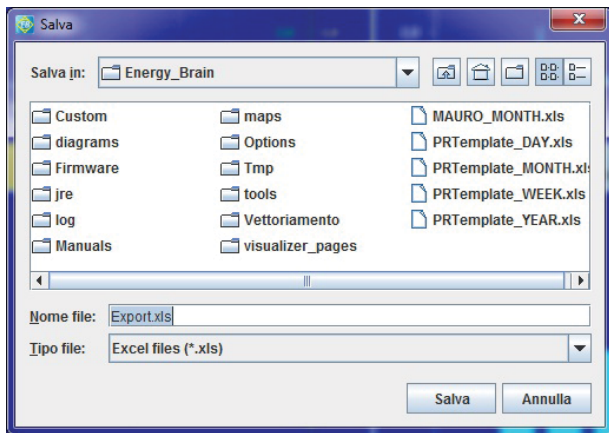
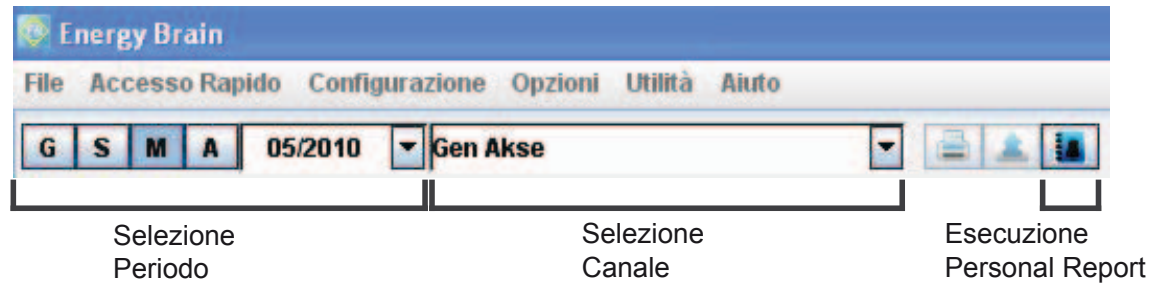


PERSONAL REPORT - MANUAL MODE

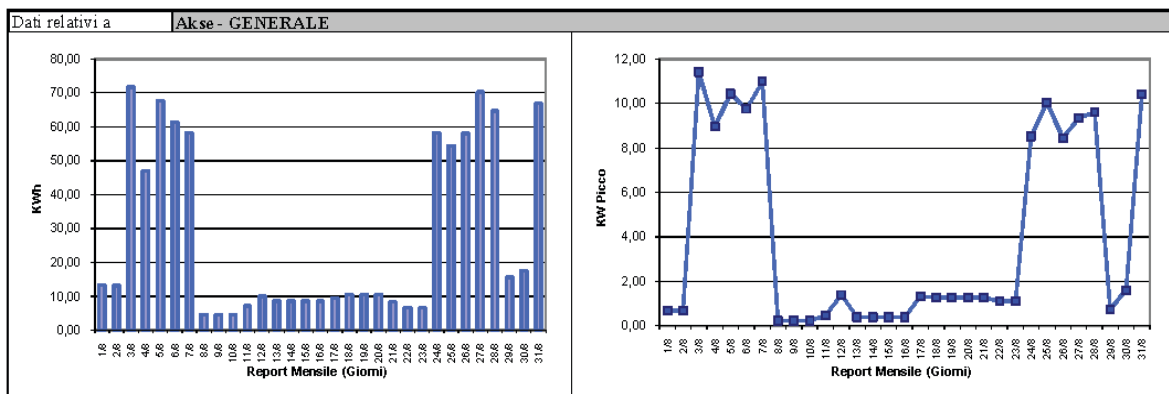
The first change you will notice when the option is activated is the Personal Report  icon near the Print and Chart Export icons.

Energy Brain without Personal Report option	Energy Brain with Personal Report option
	

The functioning of Personal Report in the manual mode will not request any specific setting beside the choosing of the period and channel to be exported. The period and channel for data exporting are chosen through the chart. The exported file is related only to the selected chart. In the manual mode it is possible to generate only the Excel file. It is not possible to send e-mail or save the file to a FTP path folder (although this can be possible by the means of external software once you know the position of the file).



Data Report Mensile:	agosto-2009
Identificativo Canale:	Akse - GENERALE
Nome Cliente:	AKSE



Energia	
F1 (kWh):	591,43
F2 (kWh):	95,84
F3 (kWh):	178,09
Tot. (kWh):	866,27
Tot. (kVArh):	187,35
Fattore di Potenza	0,98
Giorno max Consumo	lunedì 3 agosto 2009 kWh 71,77

Potenza			
Picco Max (kW):	11,41	il	03/08/2009 14:45
Picco F1 (kW):	11,41		03/08/2009
Picco F2 (kW):	5,78		05/08/2009
Picco F3 (kW):	2,59		26/08/2009

		Energia Attiva		Energia Reattiva	
Letture Contatori	Inicio	14.497,94	Inicio	-	123,30
	Fine	-	Fine	-	-

PERSONAL REPORT - CONFIGURATION

From the window here below, available only when the Personal Report has been activated, it is possible to configure the transmission parameters:

1) Activation of the exporting location (**Mandatory**)

2) Activation or Deactivation of the channels to be exported (**Mandatory**)

Note: Each selected channel corresponds to an Excel file.

3) Configuration of the parameters for e-mail sending (requested only for the file sending by e-mail):

- "A:" receiver's e-mail address.

- "Cc:" Carbon copy e-mail address.

- "Bcc:" Blind carbon copy e-mail address.

- "Subject:" To the text here inserted will be automatically added the name of the location and of the channel.

- "Message:" Free text, will be displayed in the e-mail received.

Note: More receivers (e-mail addresses) should be separate by a ","

Note: The Excel file generated will be compressed and attached automatically to the e-mail.

Note: For sending of the file by e-mail you should configure also the server settings of the Personal Report.

4) Configuration of the exporting paths (requested only if the files will be saved in specific paths).

- "Local Folder:" insert the local path where the files generated will be saved (E.g. D:\ANALYSIS or \\Server\analysis)

- "FTP path:" insert the FTP path/address where you will save the generated file ftp://user:password@ftp_address (E.g. electrex:12345@192.168.1.1)

5) Selection of the exporting period (**Mandatory**)

- The selectable periods are: daily, weekly, monthly and yearly

Note: The Personal Report elaborates, by default, the previous period to the one selected.

(E.g. if the current date is 05/07/2010 the generated report will be:

Daily = report of the 04/07/2010

Weekly = report of week from 28/06 to 04/07

Monthly = report of June 2010

Yearly = report of year 2009

Abilita
Disabilita
la località

Configurazione

Località Canali **Personal Report**

Abilita 1

Abilitato	Nome
<input checked="" type="checkbox"/>	Yocto IO
<input checked="" type="checkbox"/>	Fernto D4 70A
<input checked="" type="checkbox"/>	X3M H-D

2

In questa finestra vengono selezionati i canali da esportare

Invio e-mail 3

A: Indirizzo mail, Indirizzo mail, ecc.

Cc: Indirizzo mail per conoscenza

Ccn: Indirizzo mail nascosta

Oggetto: Oggetto della mail

Messaggio: Messaggio della mail

Esportazione 4

Cartella Locale: Percorso locale di esportazione

Percorso FTP: Percorso FTP di esportazione

Periodo: 5 Mensile

Selezione periodo di esportazione

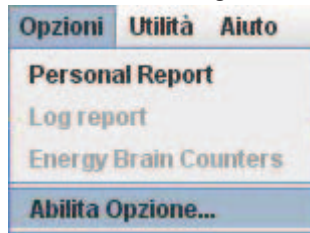
- Giornaliero
- Settimanale
- Mensile
- Annuale

Seleziona Deseleziona

OK Annulla

PERSONAL REPORT - E-MAIL SERVER SETTINGS

Selecting "Tools" and then "Personal Report" menu voices you can display the server settings window and insert the data for e-mail sending.



1) Personal Report configuration (**Mandatory**)

- "Sender" Sender's e-mail address
- "Smtp" URL or IP address of the e-mail server (Es. 192.168.1.1 or smtp.gmail.com, smtp.mail.yahoo.it, etc.)

Note: The Smtp port is 25. If you are using Lotus Notes as e-mail server it is necessary to use another server with standard Smtp port

2) Authentication (Only if requested from the e-mail server. Ask your e-mail server manager if it necessary or not)

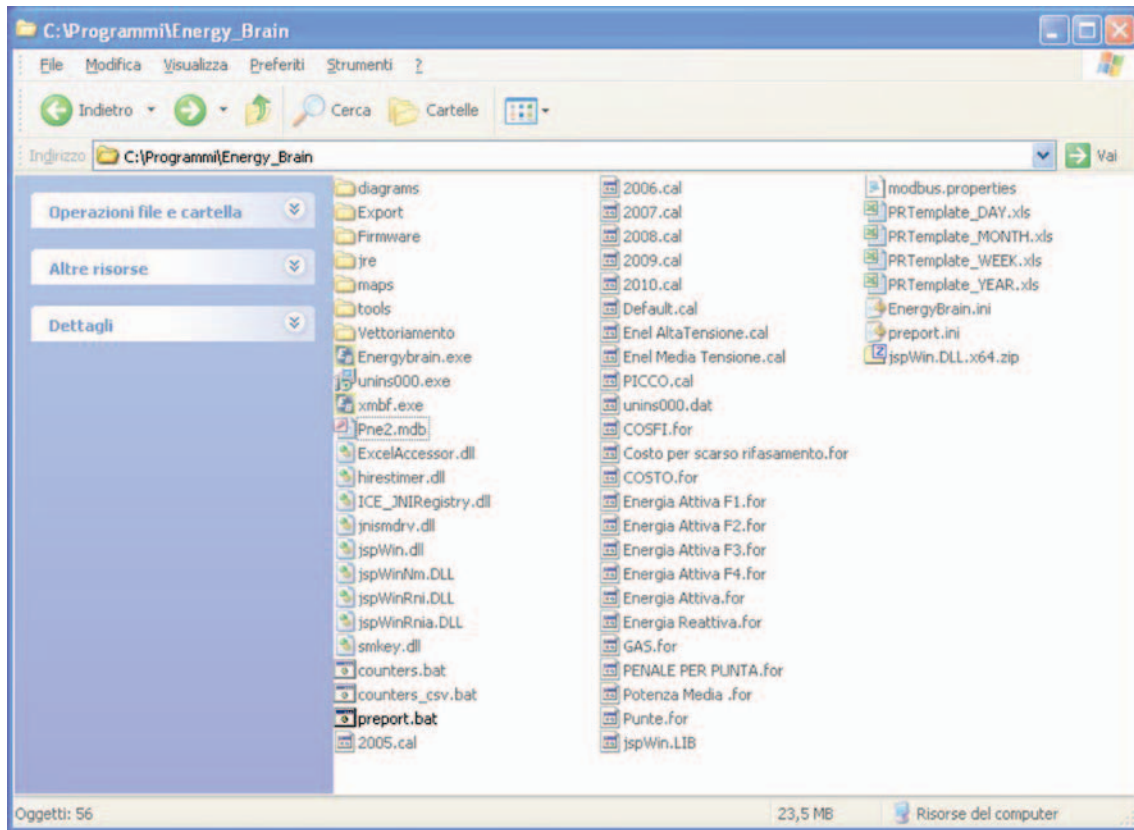
- User: User's name for the authentication
- Password: password for the authentication

3) Test Sending: it is the equivalent to the manual sending of the personal report. On clicking reports are generated following the settings of location and channels.



A screenshot of a dialog box titled 'Personal Report'. The dialog is divided into three sections, each marked with a blue circle containing a number. Section 1, 'Configurazione Personal Report', contains two text input fields: 'Mittente' with the placeholder 'Indirizzo mail mittente' and 'Smtp' with the placeholder 'Server di posta'. Section 2, 'Abilita Autenticazione', has a checked checkbox and a sub-section 'Autenticazione' with two text input fields: 'Utente' with the placeholder 'Nome utente' and 'Password' with the placeholder 'Password'. Section 3 is a button labeled 'Test di invio'. At the bottom of the dialog are 'OK' and 'Annulla' buttons.

PERSONAL REPORT - AUTOMATIC SENDING PLANNING

For the automatic generation of the reports it is used the “Scheduled Tasks” function of the Windows operating system, which on regular intervals (to be configured related to the period set in the Personal Report configuration) should execute the preport.bat file founded in the Energy Brain folder. The exact path is: C:\Programs\Energy_Brain.



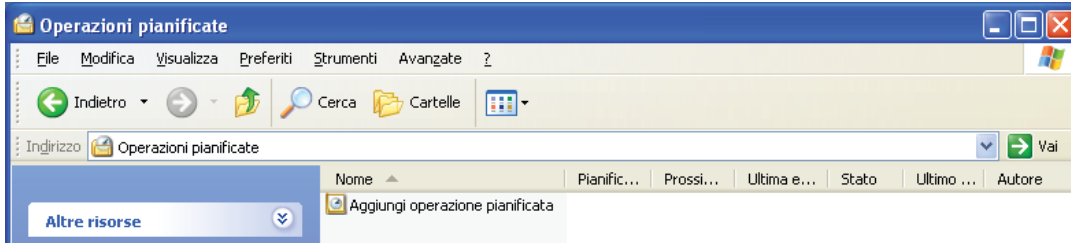
The “Scheduled Tasks” function changes icon and configuration procedure depending on different Windows operating systems and versions as. Here below you can find an example.

	Windows XP	Windows Vista and Windows Seven
Name	Scheduled Tasks	Task Scheduler
Icon	 Operazioni pianificate	
Location	Control Panel	Control Panel / Administrative tools

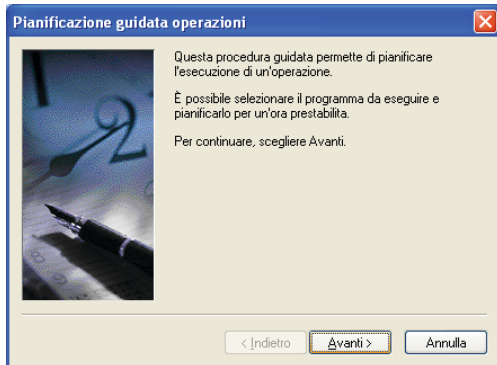
AUTOMATIC SENDING PLANNING - EXAMPLE

Here below you can find an example of configuration on Windows XP.

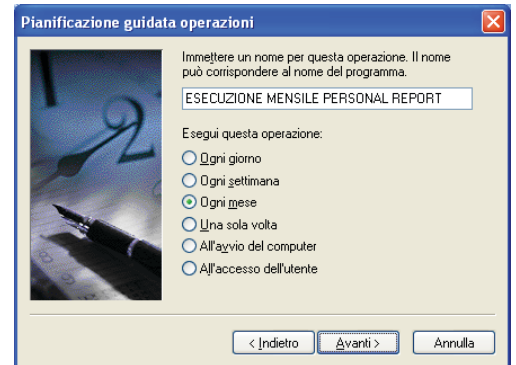
1) Open the “Scheduled Tasks“ folder and click on “Add a scheduled task”



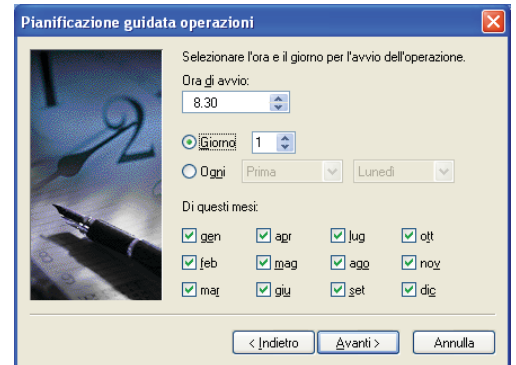
2) Go ahead with “Next”



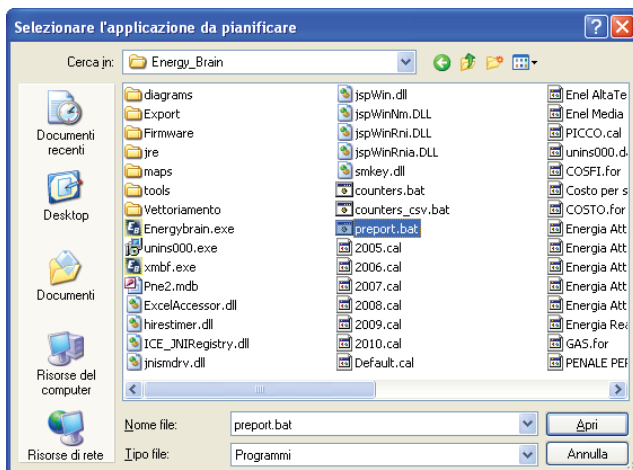
5) Select the period of execution of the file



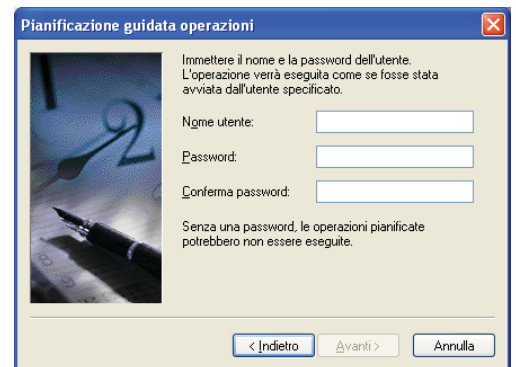
3) “Browse” to the file position



4) Select the preport.bat file in C:\Programs\Energy_Brain



6) Insert User name and Password in order to allow the execution of the file also when the PC is blocked

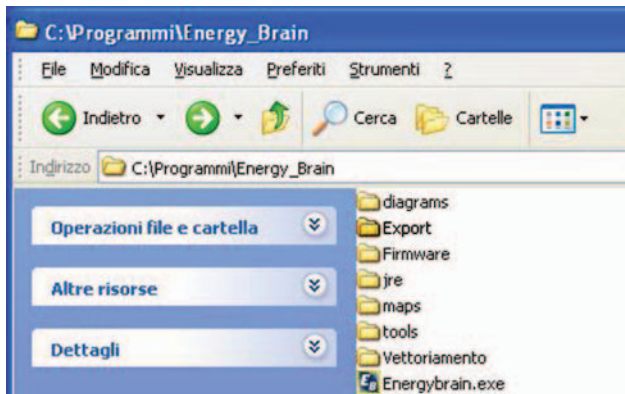


7) Planning procedure finished - from this moment the Personal Report will be created automatically.

Note: The Personal Report execution does not open any window and does not need Energy Brain software opened.

PERSONAL REPORT - SAVE FOLDER

Within the “C:\Programmi\Energy_Brain” path you can find a folder called “Export”. This folder is used for saving all the reports generated (manually or automatically), independently from the type of configuration of the Personal Report (e-mail sending, local or FTP path).

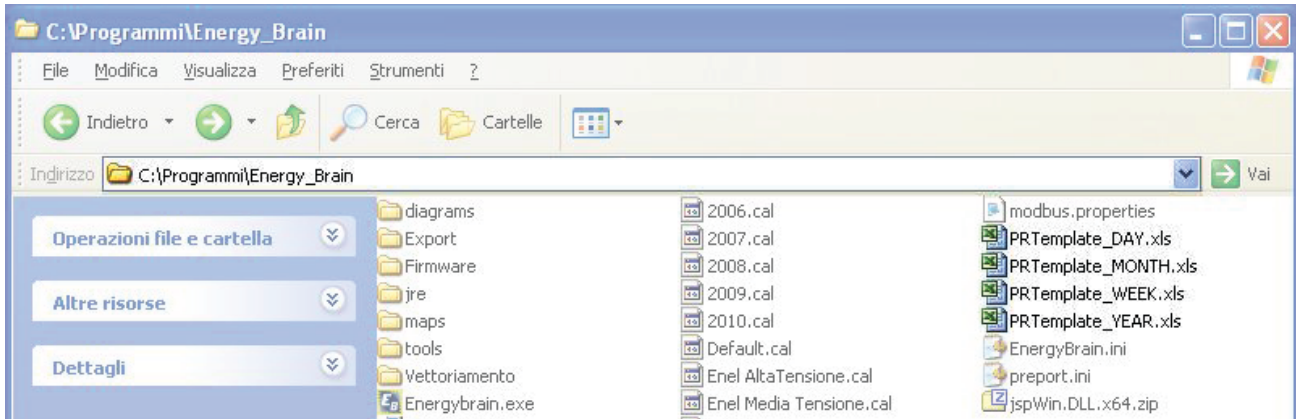


PERSONAL REPORT - HOW IT WORKS

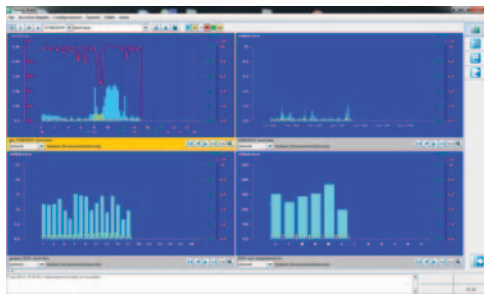
The reports generated from Personal Report software are based on templates.

The template is a document model where external data is loaded. The layout of the page will not vary over time, making so the searching, the document archiving and the confront easier. Using the spreadsheets, the template is not only a "stylesheet" for the graphics but it contains also formulas which allow the confrontation over time of the documents.

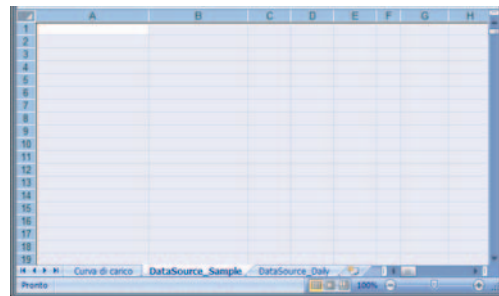
The templates can be found within folder Energy_Brain (See picture below).



Energy Brain downloads and consults the data.



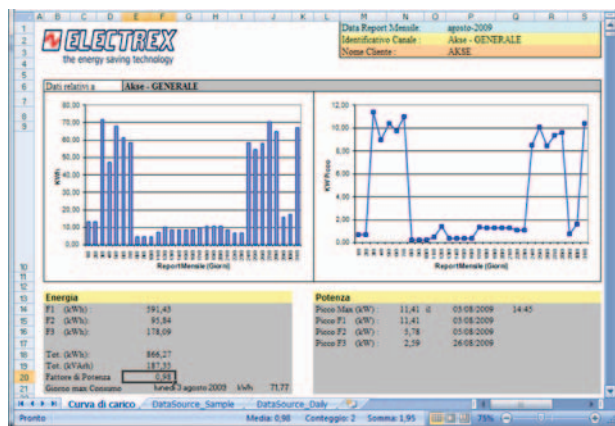
The Personal Report retrieves the data from the database and copy them to the DataSource_Sample and DataSource_Daily sheets of the Template file



Template file with the exported data

Record Number	Tariff	Sm	Qm	Sm	PF
10	3	679.69	-16.78	679.89	-1.00
11	3	671.88	-11.20	671.97	-1.00
12	3	671.88	-11.63	671.96	-1.00
13	3	660.16	-26.70	660.70	-1.00
14	3	664.06	-19.20	664.34	-1.00
15	3	671.88	-14.01	672.02	-1.00
16	3	671.88	-12.39	671.99	-1.00
17	3	671.88	-14.80	672.04	-1.00
18	3	671.88	-14.80	672.04	-1.00
19	3	671.88	-14.80	672.04	-1.00

Final Excel file



PERSONAL REPORT - CONFIGURATION FILE

[Location]		
Nome località=	<Compute or Skip>	Enable / Disable location
[Nome località]		
Nome canale=	<Compute or Skip>	Enable / Disable channel
Destination_To=	<indirizzo di destinazione>	Receivers (each e-mail address separated by common)
Destination_CC=	<indirizzo di destinazione>	Carbon Copy
Destination_BCC=	<indirizzo di destinazione>	Blind Carbon Copy
Message_Body=	<corpo della mail>	The name aof the location and channel will be added to the text
Message_Subject=	<oggetto della mail>	
Export_Dir=	<url o ip>	URL address or IP for exporting the data
Local_Dir=	<percorso sul pc>	(E.g. C:\\export)
Export_Sample=	<true o false>	Enable / Disable the exporting of the Sample table
Export_Daily=	<true o false>	Enable / Disable the exporting of the Daily table
Export_Table=	<elenco nomi tabelle o viste>	It indicates which table or look to use
Message_SourceFile=	<modello excel da utilizzare per l'esportazione>	It indicates the Excel file used as an template
PeriodType=	DAY, WEEK, MONTH, YEAR	Set the exporting period
DateFormatterYearHeader=	_year_	
DateFormatterYear=	yyyy	
DateFormatterYearFooter=		
DateFormatterMonthHeader=	_month	
DateFormatterMonth=	yy_MMMM	
DateFormatterMonthFooter=		
DateFormatterWeekHeader=	_week	
DateFormatterWeek=	ww_yy	
DateFormatterWeekFooter=		
DateFormatterDateHeader=	_day	
DateFormatterDate=	yy MM dd	
DateFormatterDateFooter=		
[Nome località Nome canale]	This section has the priority on the "Location" section. It allows to indicate for each channel a different parameter. E.g. sending the reports of two different instruments to two different e-mail addresses.	
Apply the same commands of the "Locations" section		

PERSONAL REPORT - FUNCTION MERGE

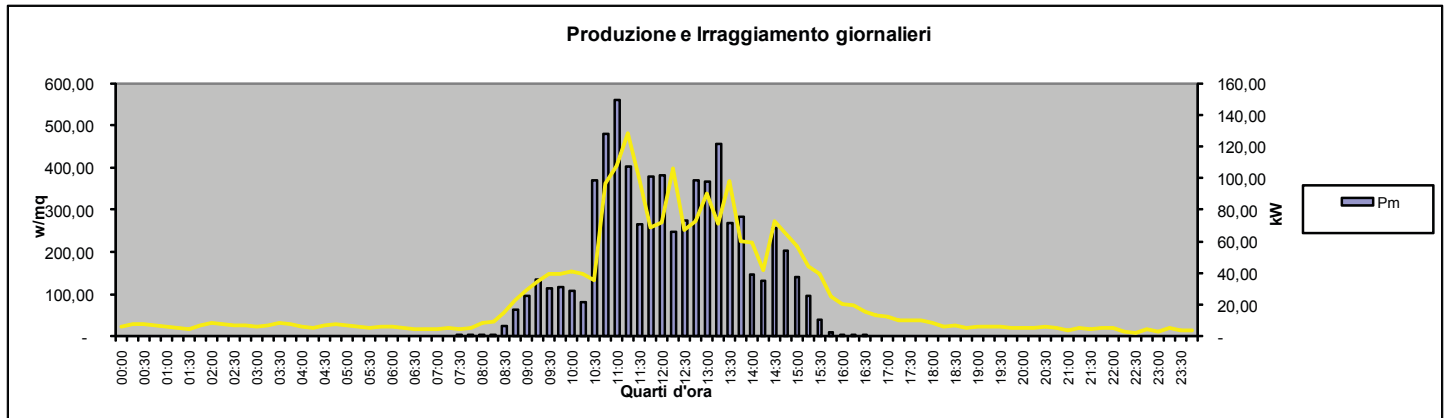
The "Merge" function allows to create a unique Excel file for all the selected instruments.
In order to activate the "Merge" function you should insert the following rows in the configuration file:

[Mode]		
Merge=true	<true o false>	Enable / Disable the "Merge" function.

- Note:
- 1) The "Merge" function is not specific to a single location, but includes all those. This means that the Excel file will include all the instruments selected in all the locations selected during the configuration of the Personal Report.
 - 2) It is not possible to use the template files included in Energy Brain. A customized Excel file should be used with this function. With the "Merge" function enabled the sheets names cannot be the same for all the channels but should be diversified through the Serial Number of the Hardware Key of Energy Brain. This means that the Excel file, for the "Merge" function, is specific to that network of instruments.



Gathering the data in a single Excel file it is possible to graph over data, coming from different instruments, in the same chart.



PERSONAL REPORT - COMMAND LINE

Command line for the customized execution:

Energybrain.exe --preport -ox -d"gg/mm/aaaa" -Cnomefile.ini

-onumber	Numbers (0,1,2,3, ecc)	sets an offset on the selected period
-d"dd/mm/yyyy"	(E.g. -d"12/01/2008")	sets the system date which will be used to 12/01/2008
-Cnomefile.ini	nomefile.ini	if not set the preport.ini will be used

[-o]

This command will set an offset on the selected period.

E.g.

Current month: June

Value	Period elaborated	
non definito	May	previous month report (Personal Report Standard)
-o0	June	current month report
-o1	May	previous month report (Personal Report Standard)
-o2	April	previous two months, from the current one, report

[-d]

This command sets the date that the Personal Report will use for the period calculation, instead of the systems date.

E.g.

Current date: 15-06-2010

Period selected: monthly

Value	Period elaborated	
-d"10/05/2010"	April 2010	Elaborates as the current month is May
-d"10/01/2010"	December 2009	Elaborates as the current month is January
-d"10/06/2010"	May 2010	It acts in standard mode, as the month has not changed

E.g.

Current date: 15-06-2010

Period selected: daily

Value	Period elaborated	
-d"10/05/2010"	09/05/2010	Elaborates as the current date is 10/05/2010
-d"10/01/2010"	09/01/2010	
-d"10/06/2010"	09/06/2010	

[-C]

It allows to indicate a configuration file different from the one set as default (preport.ini)

The use of a different configuration file is necessary in case different periods of elaboration are set.

E.g. 1. For the instrument 1 is asked a weekly report while for instrument 2 a monthly report.

In the configuration file 1 will be set parameter: "PeriodType=" to Week, while in configuration file 2 the same parameter will be set to Month.

E.g. 2. Report sending each month, monthly basis, and one yearly basis.

In the configuration file 1 will be set parameter: "PeriodType=" to Month, while in configuration file 2 the same parameter will be set to Year.

The execution of the customized files is made as follows:

Energybrain.exe --preport -CConfiguration1.ini

Energybrain.exe --preport -CConfiguration2.ini

Note:

- 1) In Windows operating system must be made two scheduled tasks for the execution of the first and second configuration.
- 2) There are no limits in the configuration files management
- 3) Beside the period it is possible to customize all the parameters of the Personal Report.