

# Data Sheet

Accessories  
919.D.011.03

## Glass-Inserted Cover Frames, Blind Covers for DIN Cutouts

AR 48  
AR 72  
AR 96  
AR 144  
AR 72x36  
AR 96x24  
AR 96x48  
AR 144x72  
BA 48  
BA 72  
BA 96  
BA 96x24



**WEIGEL**

## Application

The glass-inserted cover frames **AR 48/72/96/144/72x36/96x24/96x48/144x72** and the blind covers **BA 48/72/96/96x24** for catch fixing provide cover for DIN cutouts in switchgear panels.

## Mechanical Data

### Cover Frames, Glass-Inserted

construction	case suitable for mounting in switchboards or mosaic grid panels, stackable
material of case	polycarbonate, white (similar to RAL 9010)
window	glass ▶
colour of bezel	black (similar to RAL 9011)
panel fixing	clamp fixing or screw clamps
panel thickness	1 ... 15 mm
mounting	stackable next to each other
dimensions	refer to "Dimensions"
mounting depth	refer to "Dimensions"

### Blind Covers for DIN Cutouts

material	self-extinguishing thermoplastics PPE + PS
colour	black 701
panel fixing	catch fixing
panel thickness	1 ... 4 mm
mounting	stackable next to each other

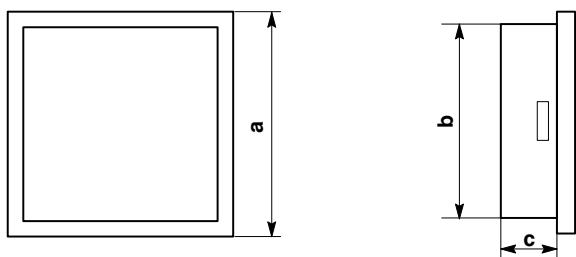
## Options (on Request)

### Cover Frames, Glass-Inserted

window	non-glaring glass or frosted glass
--------	------------------------------------

## Dimensions

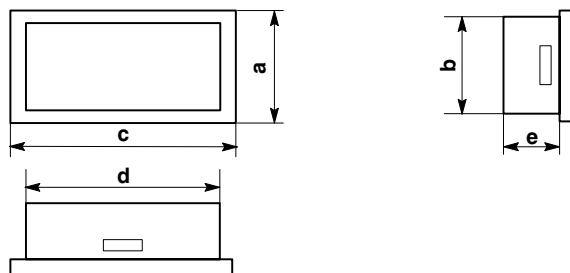
### AR 48/72/96/144



dimensions (in mm)	AR 48	AR 72	AR 96	AR 144
a	□ 48	□ 72	□ 96	□ 144
b	□ 45	□ 67.5	□ 91.5	□ 137.5
c	18	18	18	18

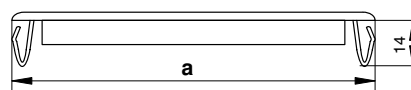
▶ Options on request

### AR 72x36/96x24/96x48/144x72



dimensions (in mm)	AR 72x36	AR 96x24	AR 96x48	AR 144x72
a	36	24	48	72
b	32,5	22	45	66
c	72	96	96	144
d	67,5	31,5	90	137
e	18,5	18,5	18,5	18,5

### BA 48/72/96/96x24



dimensions (in mm)	BA 48	BA 72	BA 96	BA 96x24
a	□ 48	□ 72	□ 96	96x24

## Ordering Information

Type	Cover frame, glass -inserted
AR 48	48 mm x 48 mm
AR 72	72 mm x 72 mm
AR 96	96 mm x 96 mm
AR 144	144 mm x 144 mm
AR 72 x 36	72 mm x 36 mm
AR 96 x 24	96 mm x 24 mm
AR 96 x 48	96 mm x 48 mm
AR 144 x 72	144 mm x 72 mm
Window	glass *) non-glaring glass **) frosted glass

\*) standard

\*\*) only for AR 72/96/144

Type	Blind cover for DIN cutouts
BA 48	48 mm x 48 mm
BA 72	72 mm x 72 mm
BA 96	96 mm x 96 mm
BA 96 x 24	96 mm x 24 mm

### ordering example

AR 144, glass -inserted cover frame, 144 mm x 144 mm, frosted glass

## WEIGEL – MESSGERÄTE GmbH

P.O.B. 720 154 • D-90241 Nürnberg • Telephone: 0911/42347-0  
Erlenstraße 14 • D-90441 Nürnberg • Fax: 0911/42347-39  
Internet: <http://www.weigel-messgeraete.de>  
e-mail: [vertrieb@weigel-messgeraete.de](mailto:vertrieb@weigel-messgeraete.de)

– specifications subject to change without notice; date of issue 07/09 –

