

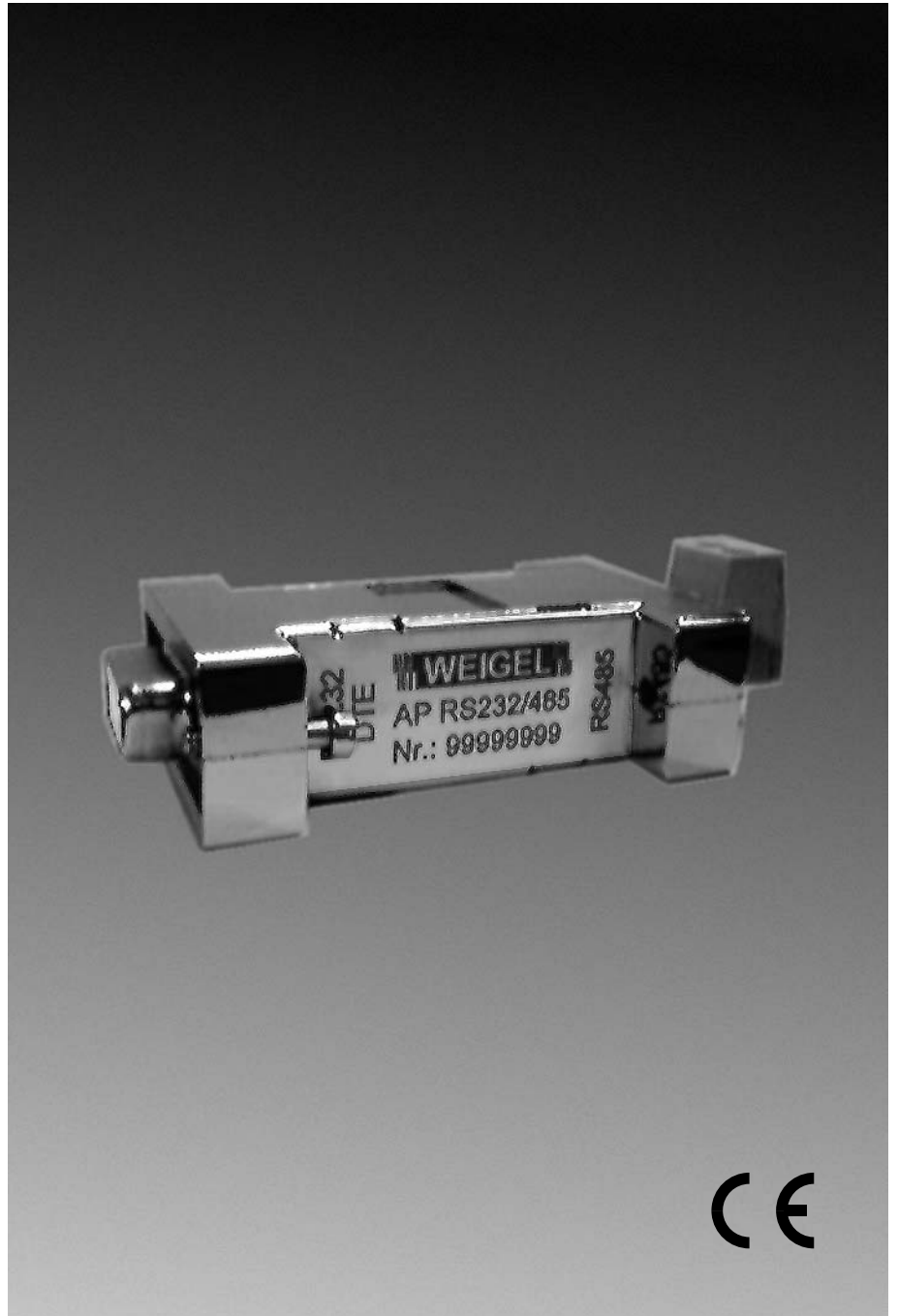


Data Sheet

054.4e

RS232-RS485 Converter

AP-RS232/485



Application

For controlling a 2-wire-RS 485 network by a commercial computer it will have to be equipped with a corresponding interface.

The RS232/485 converter provides a simple and inexpensive solution which converts the signals of an existing RS232 interface into signals of a RS485 interface.

The converter offers a practical solution to mesh, for instance, several WEIGEL-devices MU-RS232/485 via a PC.

Operating Principle

The converter is directly plugged to a 9-contact serial interface of a PC. It converts the RS232 signals of the PC into standardized RS485 signals. This conversion enables to simultaneously connect several devices by a 2-wire junction to one interface and to inquire one after another.

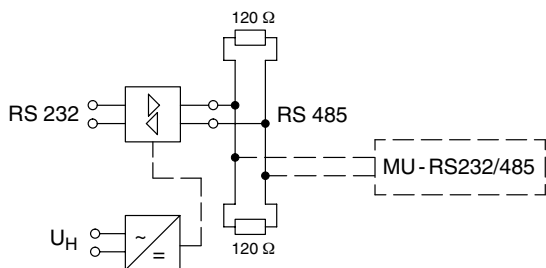
Note: Deactivate the hardware-handshake in the application software, if possible.

The device is protocol-transparent, i.e. the RS485 signals are translated 1:1 into the signals of the RS232 interface.

Depending on the 2-wire junction of the RS485, a half-duplex operation only will be possible. This means, only one device may send in the network at a time. By that a simultaneous operation of sending and receiving will not be possible.

As it is practice with RS485, the end points of the network are to be terminated by 120Ω resistors. An integrated terminating resistor can be connected or disconnected by optionally closing resp. opening a solder strap on the underside of the device.

Block Circuit Diagram



General Technical Data

case details	metalized thermoplastic case
terminals	SUB-D9-contact (RS232 interface on the PC) screw-terminals 2 contacts, wire-cross section 4 mm^2 max. (RS485 interface)
dimensions	73 mm x 34 mm x 12 mm
weight	approx. 50 g

Auxiliary Supply

power adapter	prim. AC 230 V, $\pm 10\%$, 50 Hz, sec. DC 9 V / 250 mA included with supply
---------------	---

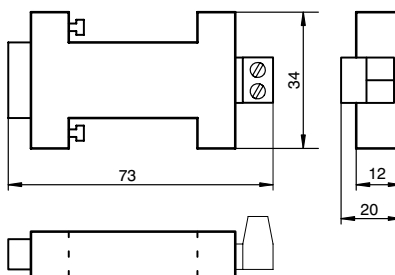
Environmental

climatic suitability	climatic class 3 to VDE/VDI 3540 sheet 2
operating temperature range	0 ... $+40^\circ\text{C}$
storage temperature range	-25 ... $+65^\circ\text{C}$
relative humidity	$\leq 75\%$ annual average, non-condensing

Rules and Standards

RS 232 (V.24)
RS 485 IEC 60870-5-103
EN 60742, EN 61558 (power adapter)

Dimensions



(dimensions in mm)

Ordering Guide

type	RS 232 - RS 485 converter
	AP-RS 232/485

Weigel Meßgeräte GmbH

Postfach 720 154 • 90241 Nürnberg • Phone: 0911/42347-0
Erlenstraße 14 • 90441 Nürnberg • Fax: 0911/42347-39
Sales: Phone: 0911/42347-94
Internet: <http://www.weigel-messgeraete.de>
e-mail: vertrieb@weigel-messgeraete.de

– specifications subject to change without notice; date of issue 06/11 –

